



ShopStreamTM
CONNECTTM

User Manual—Australia

April 2009

EAZ0057B06A Rev. A

Trademarks Acknowledgements

Snap-on, ShopStream Connect, ETHOS, MODIS, SOLUS, SOLUS PRO, and Vantage PRO are trademarks of Snap-on Incorporated.

All other marks are trademarks or registered trademarks of their respective holders.

Copyright Information

©2009 Snap-on Incorporated

All rights reserved.

Disclaimer

The information, specifications and illustrations in this manual are based on the latest information available at the time of printing.

Some functions shown require an internet connection.

Snap-on reserves the right to make changes at any time without notice.

For Technical Assistance Call:

(02) 98379130 (Within Australia)

___ 61298379130 (From New Zealand)

Safety Information

For your own safety and the safety of others, and to prevent damage to the equipment and vehicles upon which it is used, it is important that the accompanying *Safety Information* be read and understood by all persons operating, or coming into contact with, the equipment. We suggest you store a copy near the unit in sight of the operator.

This product is intended for use by properly trained and skilled professional automotive technicians. The safety messages presented throughout this manual are reminders to the operator to exercise extreme care when using this test instrument.

There are many variations in procedures, techniques, tools, and parts for servicing vehicles, as well as in the skill of the individual doing the work. Because of the vast number of test applications and variations in the products that can be tested with this instrument, we cannot possibly anticipate or provide advice or safety messages to cover every situation. It is the automotive technician's responsibility to be knowledgeable of the system being tested. It is essential to use proper service methods and test procedures. It is important to perform tests in an appropriate and acceptable manner that does not endanger your safety, the safety of others in the work area, the equipment being used, or the vehicle being tested.

It is assumed that the operator has a thorough understanding of vehicle systems before using this product. Understanding of these system principles and operating theories is necessary for competent, safe and accurate use of this instrument.

Before using the equipment, always refer to and follow the safety messages and applicable test procedures provided by the manufacturer of the vehicle or equipment being tested. Use the equipment only as described in this manual.

Read, understand and follow all safety messages and instructions in this manual, the accompanying safety manual, and on the test equipment.

Safety Message Conventions

Safety messages are provided to help prevent personal injury and equipment damage. All safety messages are introduced by a signal word indicating the hazard level.

DANGER

Indicates an imminently hazardous situation which, if not avoided, will result in death or serious injury to the operator or to bystanders.

WARNING

Indicates a potentially hazardous situation which, if not avoided, could result in death or serious injury to the operator or to bystanders.

⚠ CAUTION

Indicates a potentially hazardous situation which, if not avoided, may result in moderate or minor injury to the operator or to bystanders.

Safety messages contain three different type styles.

- Normal type states the hazard.
- Bold type states how to avoid the hazard.
- Italic type states the possible consequences of not avoiding the hazard.

An icon, when present, gives a graphical description of the potential hazard.

Example:

⚠ WARNING

Risk of unexpected vehicle movement.

- **Block drive wheels before performing a test with engine running.**
A moving vehicle can cause injury.

Important Safety Instructions

For a complete list of safety messages, refer to the accompanying safety manual.

SAVE THESE INSTRUCTIONS

Contents

Safety Information	iii
Safety Message Conventions	iii
Important Safety Instructions	iv
Contents	v
Chapter 1: Introduction	1
Chapter 2: Getting Started	2
Connecting a Diagnostic Tool to a PC	2
Starting the Software	4
Establishing Communication	5
Terminating Communication	14
Chapter 3: Navigation	15
Main Screen Layout	15
Menu Bar	16
File Menu	16
Edit Menu	16
Tools Menu	17
Print Menu	17
Help Menu	17
Toolbar Icons	18
Icons Used	18
Tabs	18
Data	19
System Info	20
Chapter 4: Operation	21
Starting ShopStream Connect™ Software	21
Controls	21
Using the Mouse	21
Using the Keyboard	21
Using Drag and Drop	22
Using the Toolbar Buttons	22
Open	22
E-mail	23
Delete	24
Edit	24
Copy To	25
Move To	25
Using the Menu Bar Buttons	25
File	25
Edit	26
Tools	27
Print	27
Help	28

Viewing Movie Files.....	28
Menu Bar	29
Display Toolbar	31
Navigation Toolbar	32
Parameter List and Tabs.....	33
Appendix A: Communicating with Early MODIS™ Units	34
Viewing Early MODIS Files	34
Index	35

The ShopStream Connect™ software is PC-based software that extends the capabilities of your handheld diagnostic tools. Using ShopStream Connect software with your handheld tools allows you to do the following:

- Exchange data files bi-directionally between the handheld tool and the PC.
- View handheld tool data files on a PC screen.
- Add or edit notes and comments to handheld tool data files.
- Install software updates from a PC onto the handheld tool.

This section explains how to connect your diagnostic tools to your personal computer (PC), and how to establish communication with your ShopStream Connect™ software.

IMPORTANT:

First, the ShopStream Connect software must be installed on your PC. Refer to the software installation instructions for details.

2.1 Connecting a Diagnostic Tool to a PC

Two types of USB cable are used to connect diagnostic tools to your PC:

- Mini A type USB cable—ETHOS™, MODIS™, SOLUS PRO™, and VantagePRO™.
- A/B type USB cable—SOLUS™.

There are three types of USB cable connector (Figure 2-1):

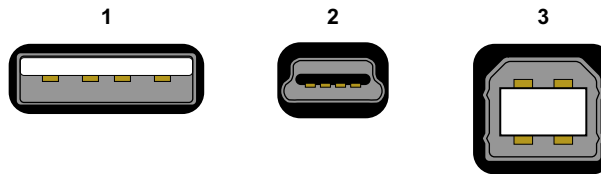


Figure 2-1 Sample USB connector types

1— Type A connector—used on your PC

2— Type mini A connector—used on ETHOS, MODIS, SOLUS PRO™, and VantagePRO

3— Type B connector—used on SOLUS



To connect a handheld tool to a PC:

1. Plug the Type A end of a USB cable into a Type A USB port on your PC.
2. Plug the other end of the USB cable into the appropriate USB port on the handheld tool:
 - ETHOS—mini A USB port on top of the unit (Figure 2-2).



Figure 2-2 Sample ETHOS USB port location

- MODIS—mini A USB port mounted on the circuit board, above the compact flash card under the left handgrip of the unit (Figure 2-3).



Figure 2-3 Sample MODIS USB port location

IMPORTANT:

Older MODIS units do not have a USB port on the circuit board by the side CF card slot, and they cannot be connected to a PC with a cable. However, saved files can be viewed with ShopStream Connect and older units can be upgraded to current specifications. Refer to [“Communicating with Early MODIS™ Units” on page 34](#) for additional information.

- SOLUS—type B USB port on top of the unit (Figure 2-4).



Figure 2-4 Sample SOLUS USB port location

- SOLUS PRO—mini A USB port on top of the unit (Figure 2-5).



Figure 2-5 Sample SOLUS PRO USB port location

- VantagePRO—mini A USB port under the sliding shield on the top of the unit. (Figure 2-6).



Figure 2-6 Sample VantagePRO USB port location

2.2 Starting the Software

The ShopStream Connect software runs on your PC. Starting the software depends on your setup preference. There two ways to start the software:

- The Windows Start menu
- A shortcut on the Windows desktop



To start the software from the Windows Start menu:

- Select **Start > Programs > ShopStream Connect > ShopStream Connect** (Figure 2-7).

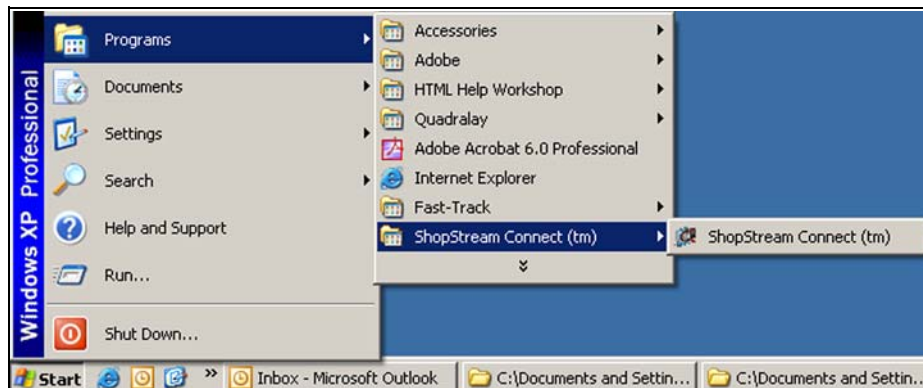


Figure 2-7 Sample Start menu selection



To start the software from a Windows desktop shortcut:

- Double-click the **ShopStream Connect** icon (Figure 2-8).



Figure 2-8 Sample desktop icon

2.3 Establishing Communication

Establishing communication varies slightly for each of the Snap-on® handheld diagnostic tools. Use one of the following procedures to establish communication between your handheld unit and your PC:

- [To establish communication with your ETHOS scan tool: refer to page 5](#)
- [To establish communication with your MODIS unit: refer to page 7](#)
- [To establish communication with your SOLUS™ scan tool: refer to page 9](#)
- [To establish communication with your SOLUS PRO™ scan tool: refer to page 10](#)
- [To establish communication with your VantagePRO graphing meter: refer to page 12](#)



To establish communication with your ETHOS scan tool:

1. Power off the ETHOS unit.
2. On the PC, start the ShopStream Connect software. Refer to [“Starting the Software”](#) for details.
3. On the ETHOS™ unit, simultaneously hold down the **Y/a** and **N/x** buttons and press the **Power** button.

The Service Menu displays ([Figure 2-9](#)).

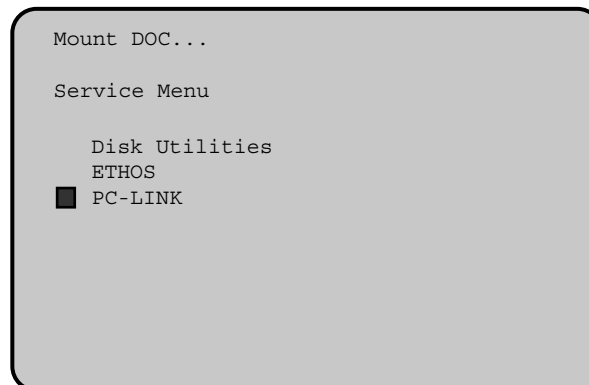


Figure 2-9 Sample Service menu

4. On the ETHOS unit, from the Service Menu, select **PC-LINK**.
5. Connect the USB cable to both the ETHOS unit and the PC. Refer to [“Connecting a Diagnostic Tool to a PC”](#) for details.

IMPORTANT:

Unless you are specifically instructed to do so and have precise instructions, do not attempt to use any other functions on the Service Menu. Improper use of Service Menu functions can corrupt the internal file structure and render the scan tool inoperative.

On your PC, a “removable disk” dialog automatically opens ([Figure 2-10](#)).

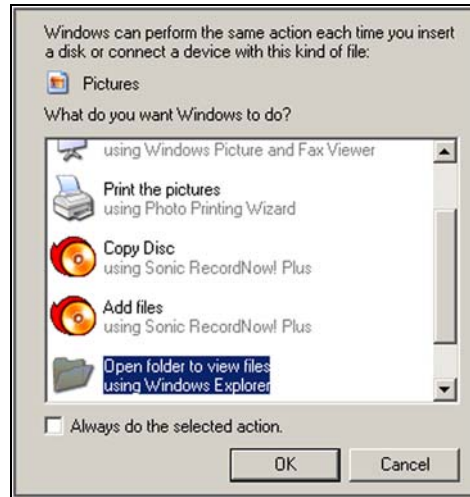


Figure 2-10 Sample “removable disk” dialog

6. Click the **Cancel** button.
7. ShopStream Connect should default to display the data stored on your ETHOS scan tool (Figure 2-11). If not, click the **ETHOS** icon at the end of the file directory list.

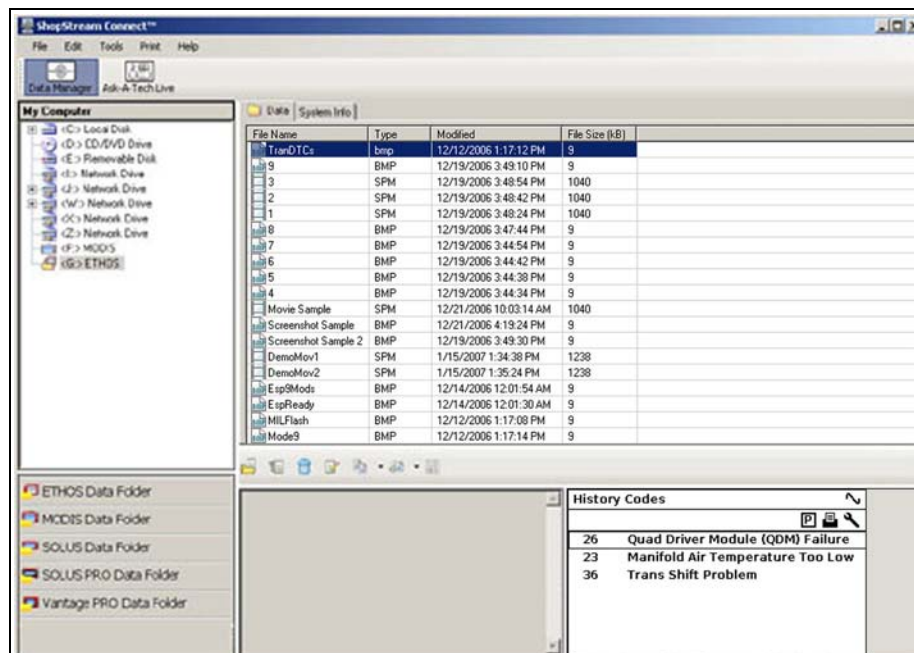


Figure 2-11 Sample ETHOS Data

Once communication is established between your PC and ETHOS, the Mounting screen displays on your ETHOS unit (Figure 2-12).

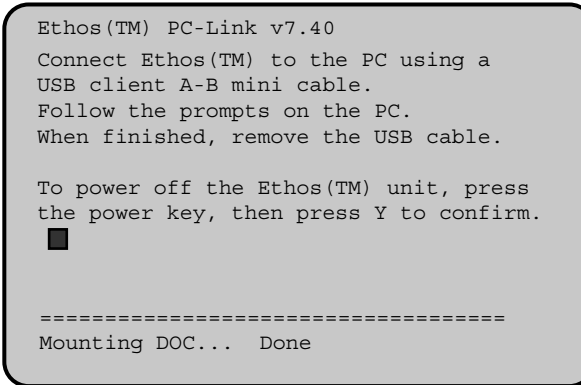


Figure 2-12 Sample Mounting screen

**To establish communication with your MODIS unit:**

1. Press the **Power** button to turn on the MODIS unit.
2. From the Main Menu, navigate to **UTILITIES > Connect to PC**, and press **Y** to select. (Figure 2-13).

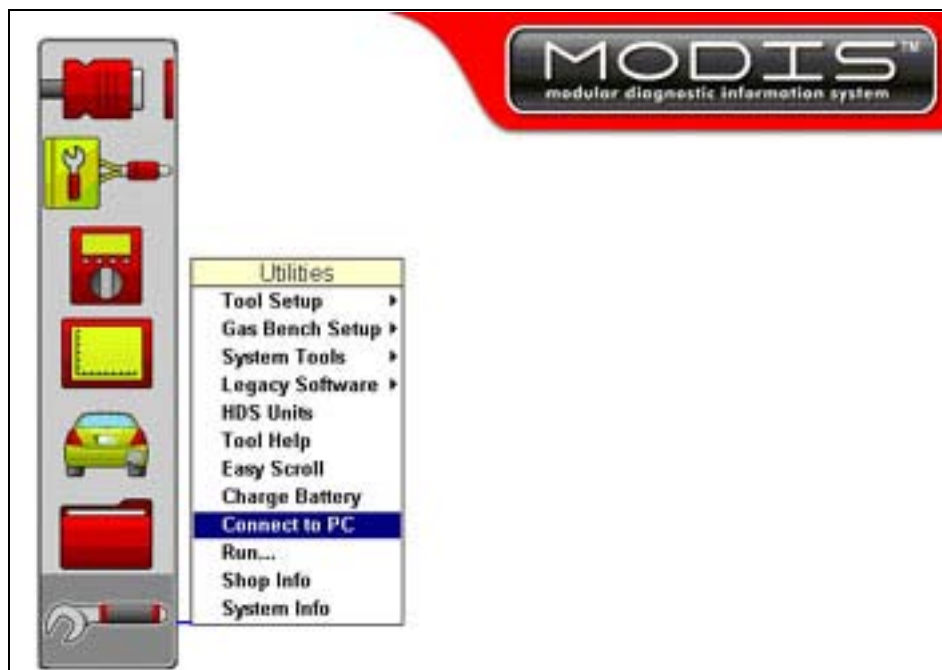


Figure 2-13 Sample MODIS utilities menu

A configure for Connect to PC message displays (Figure 2-14)

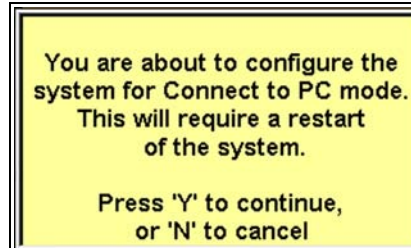


Figure 2-14 Sample Connect to PC message

3. Press **Y** to power down the MODIS unit.
4. Press the **Power** button to turn on the MODIS unit.
A Connect to PC mode message displays (Figure 2-15)

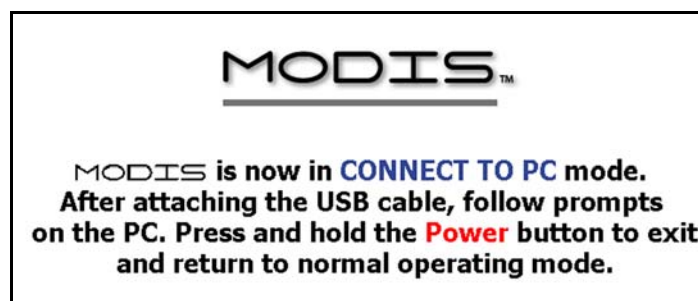


Figure 2-15 Sample MODIS in Connect to PC mode message

5. Connect the type A/mini A USB cable between the MODIS and your PC. Refer to [“Connecting a Diagnostic Tool to a PC”](#) for details:
 - a. The type A connector cable end attaches to a USB port on the PC.
 - b. The type mini A connector cable end attaches to the mini USB port, which is mounted on the circuit board, above the compact flash card under the left handgrip of the MODIS unit.

IMPORTANT:

A USB mini A strain relief clip (EAS2036L38A) must be installed (Figure 2-16). The clip is a thin metal shield that surrounds the connector and secures it to the circuit board. To our knowledge all units sold in Australia and New Zealand have this clip.

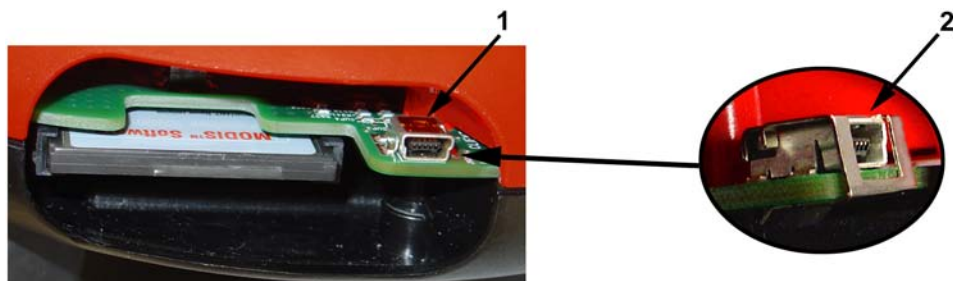


Figure 2-16 Strain Relief Clip EAS2036L38A

- 1— MODIS mini A USB port without a strain relief clip
- 2— Strain relief clip installed on a MODIS mini A USB port

6. If a “removable disk” dialog automatically opens on your PC, click **Cancel** (Figure 2-17).

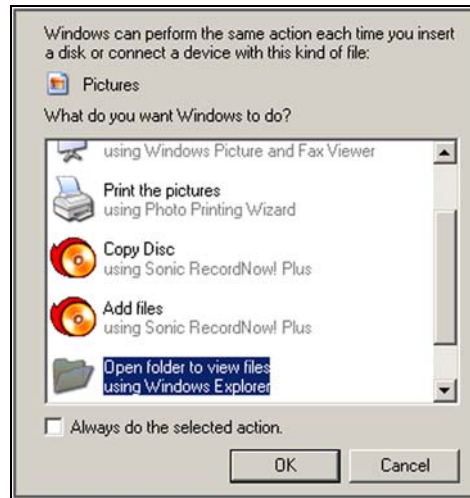


Figure 2-17 Sample “removable disk” dialog

7. Launch ShopStream Connect (see “Starting the Software” on page 4).
ShopStream Connect should default to display the data stored on your MODIS unit. If not, click the **MODIS** icon at the end of the file directory list.



To establish communication with your SOLUS™ scan tool:

1. Press the **Power** button to turn on the SOLUS unit.
2. From the Main Menu, navigate to **UTILITIES > Connect to PC** (Figure 2-18).

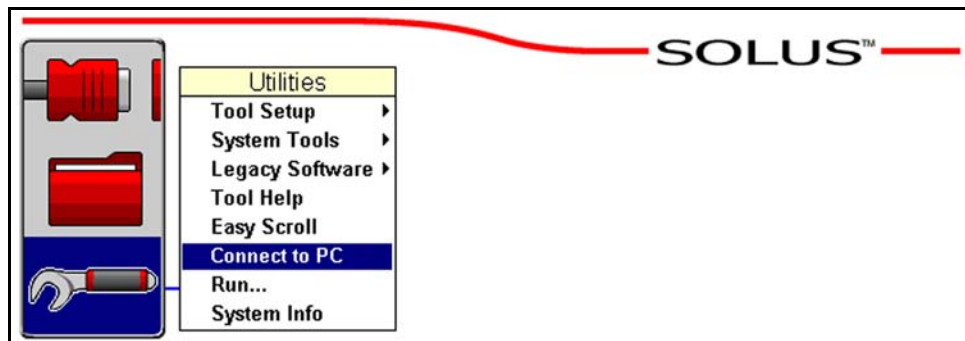


Figure 2-18 Sample SOLUS utilities menu

3. Press **Y** to select and a configuring for Connect to PC message displays (Figure 2-19)

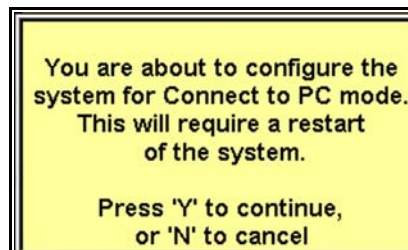


Figure 2-19 Sample Connect to PC message

4. Press **Y** to power down the SOLUS unit.
5. Press the **Power** button to turn on the SOLUS unit.
A Connect to PC mode message displays (Figure 2-20).

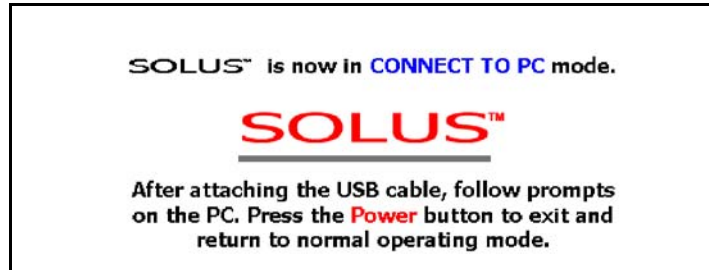


Figure 2-20 Sample SOLUS in Connect to PC mode message

6. Connect a type A/B USB cable between the SOLUS and your PC. Refer to [“Connecting a Diagnostic Tool to a PC”](#) for details:
 - a. The type A connector cable end attaches to a USB port on the PC.
 - b. The type B connector cable end attaches to the USB port on top of the SOLUS unit.
7. If a “removable disk” dialog automatically opens on your PC, click **Cancel** (Figure 2-21).

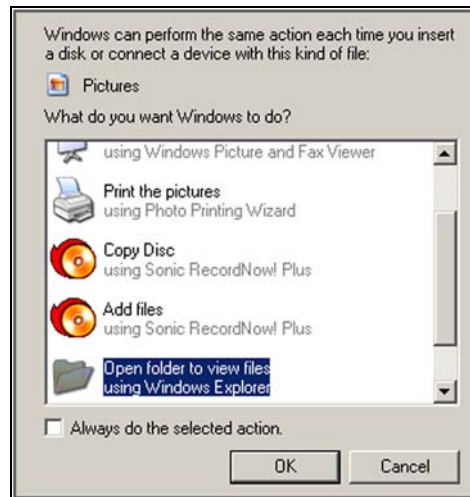


Figure 2-21 Sample “removable disk” dialog

8. Launch ShopStream Connect (see [“Starting the Software”](#) on page 4).
ShopStream Connect should default to display the data stored on your SOLUS scan tool.
If not, click the **SOLUS** icon at the end of the file directory list.



To establish communication with your SOLUS PRO™ scan tool:

1. Press the **Power** button to turn on the SOLUS PRO unit.
2. From the Main Menu, navigate to **UTILITIES > Connect to PC** (Figure 2-18).

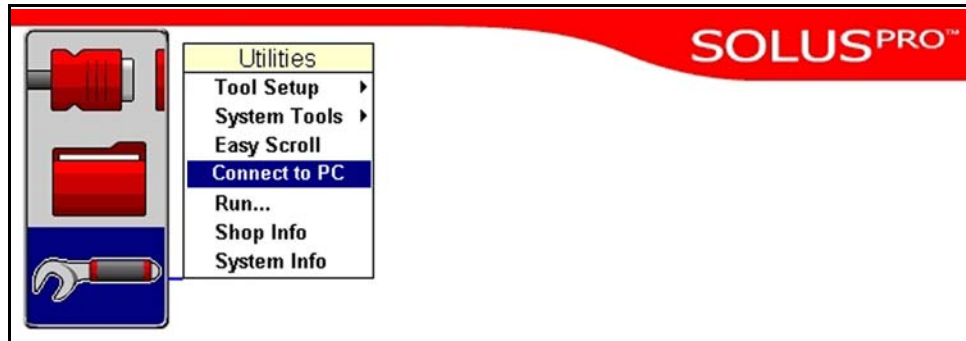


Figure 2-22 Sample SOLUS PRO utilities menu

3. Press **Y** to select and a configuring for Connect to PC message displays (Figure 2-19)

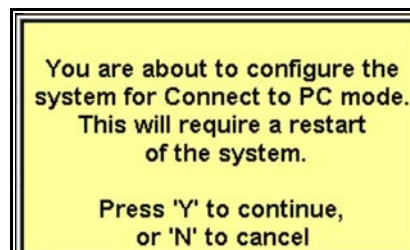


Figure 2-23 Sample Connect to PC message

4. Press **Y** to power down the SOLUS PRO unit.
5. Press the **Power** button to turn on the SOLUS PRO unit.
A Connect to PC mode message displays (Figure 2-20)

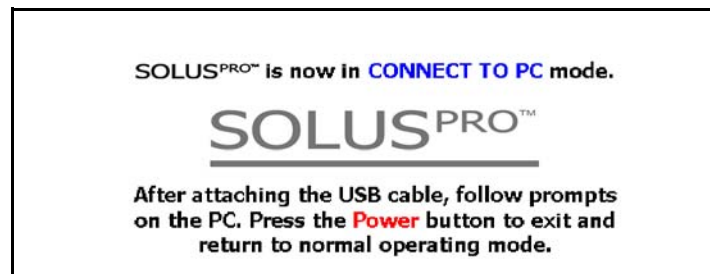


Figure 2-24 Sample SOLUS PRO in Connect to PC mode message

6. Connect a type A/mini A USB cable between the SOLUS PRO and your PC. Refer to [“Connecting a Diagnostic Tool to a PC”](#) for details:
 - a. The type A connector cable end attaches to a USB port on the PC.
 - b. The type mini A connector cable end attaches to the USB port on top of the SOLUS PRO unit.
7. If a “removable disk” dialog automatically opens on your PC, click **Cancel** (Figure 2-21).

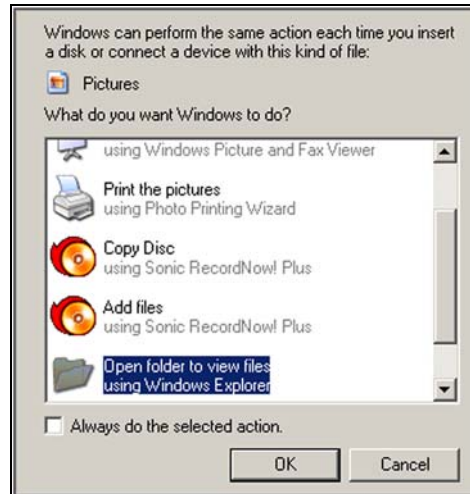


Figure 2-25 Sample “removable disk” dialog

8. Launch ShopStream Connect (see “Starting the Software” on page 4).
ShopStream Connect should default to display the data stored on your SOLUS PRO scan tool. If not, click the **SOLUS PRO** icon at the end of the file directory list.



To establish communication with your VantagePRO graphing meter:

1. Press the **Power** button to turn on the VantagePRO unit.
2. From the Main Menu, navigate to **UTILITIES > Connect to PC** (Figure 2-26).

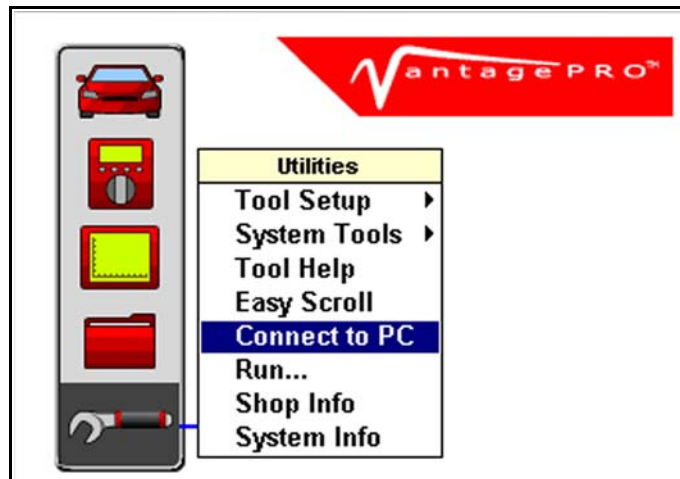


Figure 2-26 Sample VantagePRO utilities menu

3. Press **Y** to select and a configuring for Connect to PC message displays (Figure 2-27)

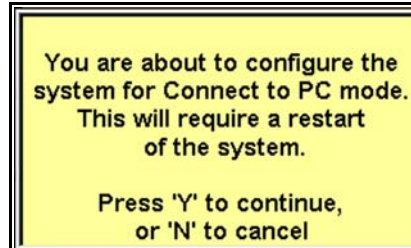


Figure 2-27 Sample Connect to PC message

4. Press **Y** to power down the VantagePRO unit.
5. Press the **Power** button to turn on the VantagePRO unit.
A Connect to PC mode message displays (Figure 2-28)



Figure 2-28 Sample VantagePRO in Connect to PC mode message

6. Connect the type A/mini A USB cable between the VantagePRO and your PC:
 - a. The type A connector cable end attaches to a USB port on the PC.
 - b. The type mini A connector cable end attaches to the mini USB port, which is under the sliding shield on the top of the VantagePRO unit.
7. If a "removable disk" dialog automatically opens on your PC, click **Cancel** (Figure 2-29).

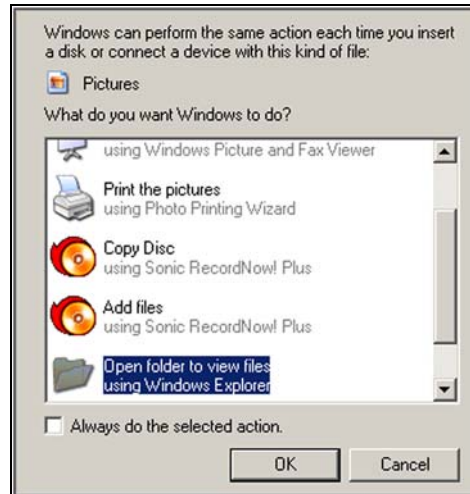


Figure 2-29 Sample “removable disk” dialog

8. Launch ShopStream Connect (see [“Starting the Software” on page 4](#)).
ShopStream Connect should default to display the data stored on your VantagePRO. If not, click the **VantagePRO** icon at the end of the file directory list.

2.4 Terminating Communication

Use the following procedure to terminate communication between your handheld diagnostic tool and your PC.



To terminate communication between your handheld unit and PC:

1. Click **File** on the ShopStream Connect menu bar.
A dropdown menu displays.
2. Select **Exit** from the dropdown menu ([Figure 2-30](#)).



Figure 2-30 Sample Exit selection

3. Disconnect the USB cable from your handheld unit.

3.1 Main Screen Layout

The following explains the screen layout for ShopStream Connect™ software.

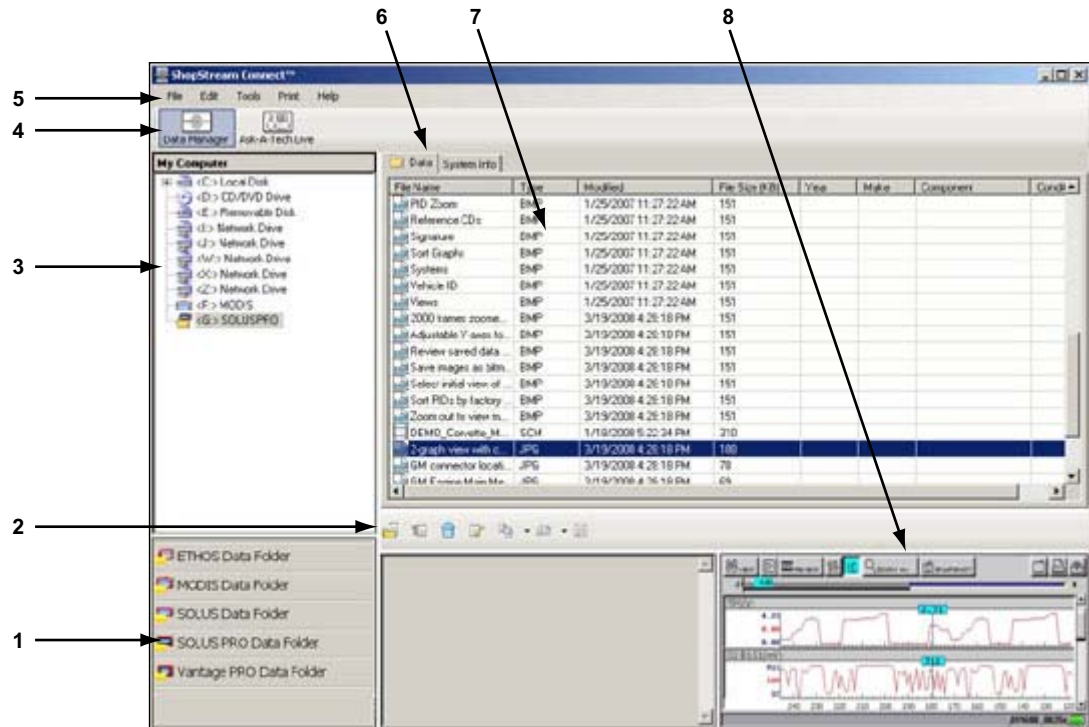


Figure 3-1 ShopStream Connect screen layout

1— Tool Folders

Provides shortcuts to the tool data files that have been saved to the PC.

2— Toolbar

Provides icon buttons that perform a variety of operations on data files.

3— File directory structure

Displays the file directory structure of your PC in standard Windows format, and shows any connected handhelds at the bottom of the data list.

4— Module Toolbar

Figure 3-1 is for illustration purposes only. Data Manager is the only Australian option.

5— Menu bar

Contains **File**, **Edit**, **Tools**, **Print** and **Help** menus.

6— Tabs

Provides access to data files and presets stored on the handheld or on the PC, and also allows viewing of software revision details of the handheld.

7— Main display

Shows stored data files details.

8— Preview

Displays a sample of the file if the selected file is a bitmap (BMP) image.

3.2 Menu Bar

The menu bar at the top of the screen contains the **File**, **Edit**, **Tools**, **Print** and **Help** menus.

3.2.1 File Menu



Figure 3-2 File menu

The following functions are available from the **File** menu:

- **Open File**—opens a data file for viewing.
- **Copy to...**—creates a duplicate of the selected file(s) at the other location (PC if the file is on the handheld or handheld if the file is on the PC).
- **Move to...**—moves selected file(s) to the other location (PC if the file is on the handheld or handheld if the file is on the PC).
- **Delete**—erases the selected file(s).
- **Edit**—changes the name of file selection.
- **Email**—starts an e-mail message with a copy of file selections attached.
- **Refresh**—Resamples and cleans up the display screen.
- **Exit**—closes the ShopStream Connect software.

3.2.2 Edit Menu



Figure 3-3 Edit menu

The **Copy** and **Paste** functions available from the **Edit** menu, follow Windows operational standards.

3.2.3 Tools Menu

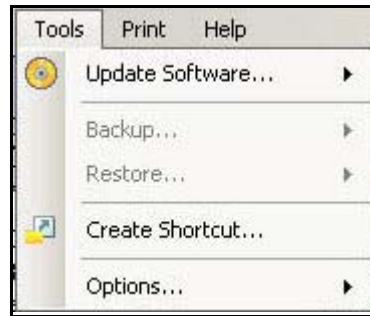


Figure 3-4 Tools menu

The tools menu has the following functions available:

- **Update Software**—downloads program updates for your handheld tools and PC.
- **Backup**—copies the handheld tool data onto the PC.
- **Restore**—reinstalls the operating program on a handheld tool.
- **Options**—this feature is not available at this time.

3.2.4 Print Menu

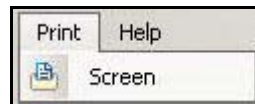


Figure 3-5 Print menu

Sends the current screen to a printer.

3.2.5 Help Menu

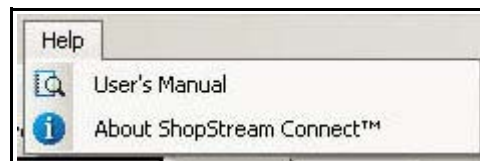


Figure 3-6 Help menu

The following commands are available from the **Help** menu:

- **Help**—opens the on-line help system included in the software.
- **User's Manual**—opens the ShopStream Connect User's Manual in PDF format.
- **About ShopStream Connect**—shows the active version of the ShopStream Connect software.

3.3 Toolbar Icons

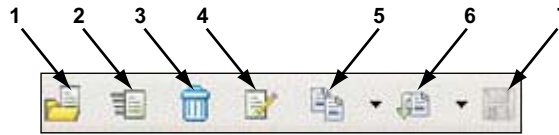



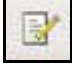





Figure 3-7 ShopStream Connect toolbar

- 1— Open
- 2— E-mail
- 3— Delete
- 4— Edit
- 5— Copy to
- 6— Move to
- 7— Save

3.3.1 Icons Used

The following icons are used in the toolbar:

	Open	Opens the highlighted file.
	E-mail	Opens the E-mail window and automatically attaches any currently selected files to the E-mail. This function requires a functioning e-mail connection to be installed on the computer.
	Delete	Erases the selected files from tool or PC memory.
	Edit	Opens a window for changing the file name.
	Copy To	Copies data and preset files between the computer and the diagnostic tool internal memory.
	Move To	Transfers data and preset files between the computer and the diagnostic tool internal memory.
	Save	Saves the open file. This function is only available after a file has changed.

3.4 Tabs

Tabs positioned at the top of the ShopStream Connect main display control the visible file information. The active tab is highlighted.



Figure 3-8 Sample Tabs

- 1— Data**
Displays a list of the data files on the handheld or stored on the PC.
- 2— Presets**
Displays a list of the preset files stored in the handheld or PC memory.
- 3— System Info**
Displays the serial number and version number of the handheld or PC.

3.4.1 Data

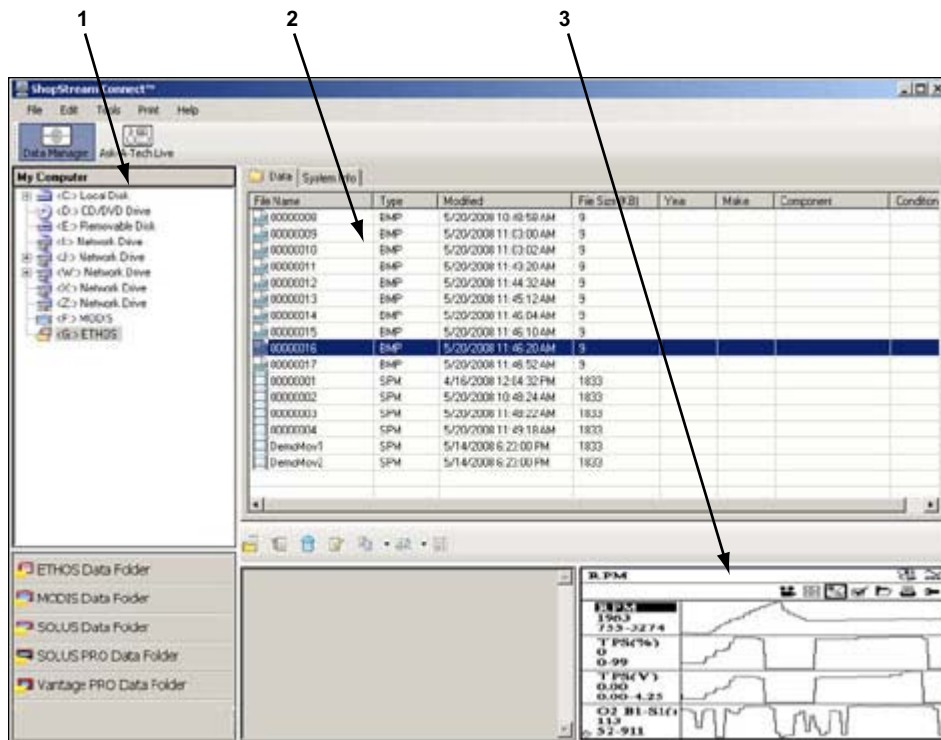


Figure 3-9 Sample Data screen

The Data screen consist of the following frames:

- 1— File directory structure**
Shows the file directory structure in standard Windows format.
- 2— Main display**
Shows a list of tool data stored in the directory selected in the file structure frame.
- 3— Preview**
Shows a sample of the selected BMP file.

3.4.2 System Info

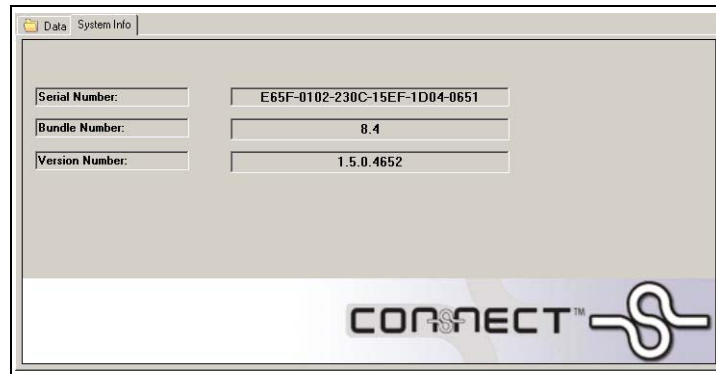


Figure 3-10 Sample System Info Tab

The System information screen displays details about the currently installed software including:

- **Serial Number**—used to uniquely identify your handheld tool.
- **Bundle Number**—used to identify the software release date.
- **Version Number**—used to identify the specific software version.

4.1 Starting ShopStream Connect™ Software

For program start up information, refer to [“Starting the Software” on page 4](#).

4.2 Controls

The ShopStream Connect software supports the use of either a mouse or computer keyboard.

4.2.1 Using the Mouse

- Use the **left mouse button** to:
 - Select a toolbar button or control
 - Select an item from a drop-down menu
 - Operate the on-screen arrow keys
- Use the **right mouse button** to:
 - Open the context sensitive menu

4.2.2 Using the Keyboard

- Use the **left keyboard arrow** to:
 - Move the highlight to the next available button or control to the left
- Use the **right arrow key** to:
 - Move the highlight to the next available button or control to the right
- Use the **up arrow key** to:
 - Move the highlight up in a drop-down menu
 - Move the highlight from the lower toolbar to the upper toolbar
- Use the **down arrow key** to:
 - Move the highlight down in a drop-down menu
- Use the **Enter** button to:
 - Select a highlighted toolbar button or control
 - Accept a selection from a drop-down menu
 - Activate a highlighted control
- Use the **Esc** button to:
 - Exit a function
 - Close a drop-down menu without changing the selection
 - Release a control

4.3 Using Drag and Drop

Files stored on the computer may be moved in the file directory structure frame (Figure 4-1) by using Windows-standard drag-and-prop functionality. ShopStream Connect creates individual “Files” folders for each tool (ETHOS, MODIS, SOLUS, SOLUS PRO, and Vantage PRO) when the software installs. By default, the folders are placed on the top level of your hard drive. Drag and drop files from the list to a folder.

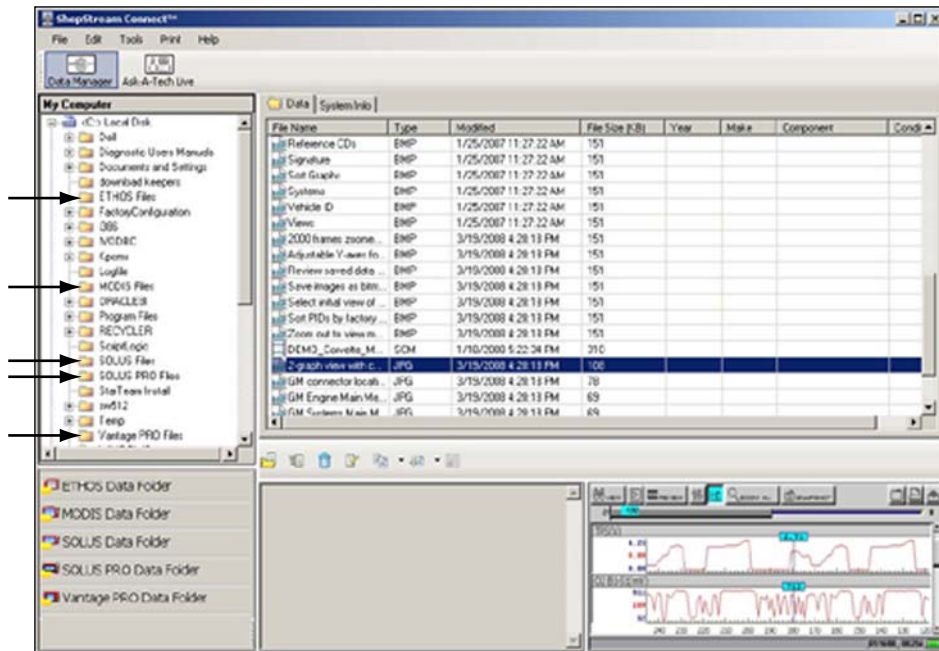


Figure 4-1 Sample file directory structure frame

4.4 Using the Toolbar Buttons

This section explains toolbar button operations, refer to “Main Screen Layout” on page 15.

4.4.1 Open

The ShopStream Connect software lets you to use your computer to view bitmap files (*.BMP) and movie files (*.SPM) stored on both the computer and the handheld diagnostic tool.



To view a file:

1. Select the **Data** tab.
2. Highlight the file that you wish to view.
3. Click the **Open** icon on the toolbar.

The selected file displays on the computer screen (Figure 4-2).

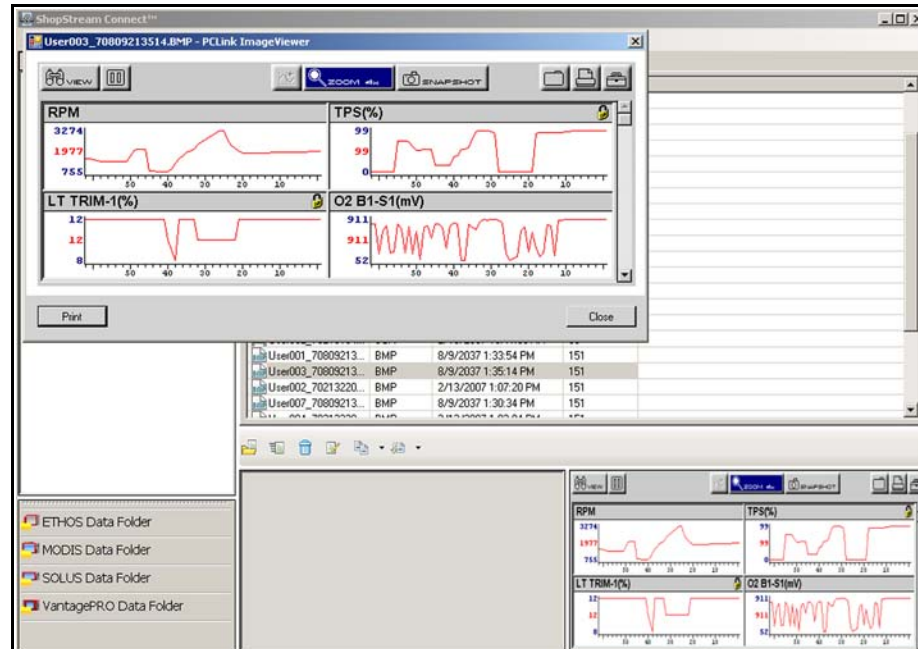


Figure 4-2 Sample BMP file display



NOTE:

You can also open a file by selecting **File > Open File** from the File menu or by double-clicking the selected file name.

4.4.2 E-mail

This function sends a copy of selected files from your computer or handheld diagnostic tool via E-mail.



NOTE:

The E-mail option uses the default E-mail program installed on your computer. If your computer is not configured for E-mail, this option will not work.



To use the E-mail function:

1. Select the **Data** tab.
A list of available files displays.
2. From the on-screen list, highlight the file you wish to send.
3. From the toolbar, select **E-mail**.

The New Message window opens showing the selected file(s) in the “Attach” field (Figure 4-3).

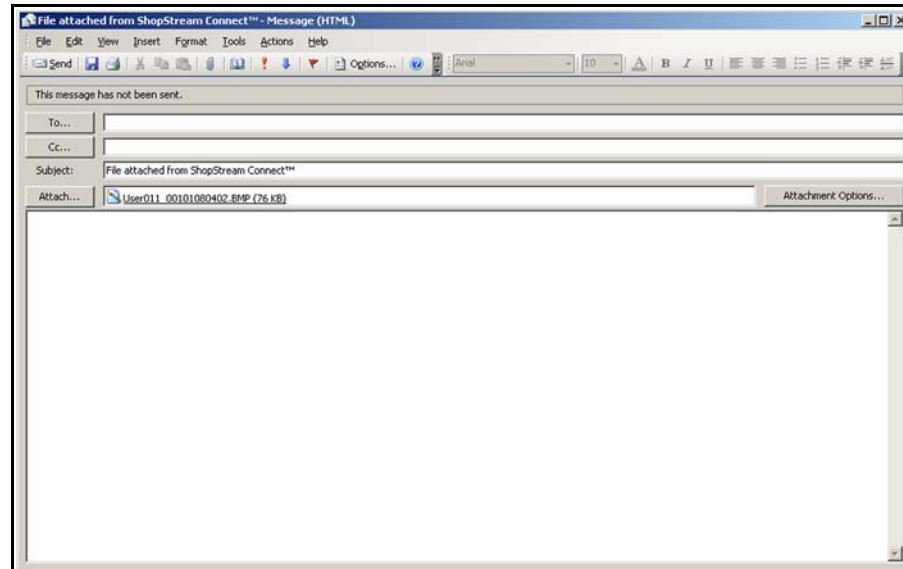


Figure 4-3 Sample E-mail window

4. Enter the recipient's E-mail address, the subject of the message and any message text.
5. From the New Message window toolbar, select **Send**.

4.4.3 Delete

Files stored on the computer are typically sent to the recycle bin on your PC but vary depending on your Windows settings. Files stored in handheld tool memory are always permanently deleted.



To delete a file:

1. Select the **Data** tab.
2. Highlight the file that you wish to delete.
3. Click the **Delete** icon on the toolbar.
4. A confirmation screen displays:
 - a. Click **Yes** to permanently erase the file.
 - b. Click **No** to cancel.

4.4.4 Edit

The Edit button lets you quickly change the name of a file.



To edit a file:

1. Select the **Data** tab.
2. Highlight the file that you wish to rename.
3. Click the **Edit** icon on the toolbar.

A New File Name window opens ([Figure 4-4](#)).

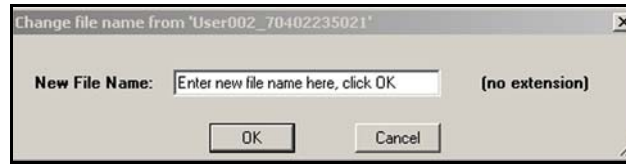


Figure 4-4 Sample New File Name Window

4. Type in the new name for the file.
5. Click **OK** to close the window.

4.4.5 Copy To

The **Copy To** function creates a duplicate of the selected file or files on either the PC or the handheld tool. Depending on where the original files reside, the duplicates copy to the other device. Select **Copy To** and a dropdown menu displays to show where the file will be copied to. The original files are still available in the original location.

4.4.6 Move To

The **Move To** function allows you to interchange files between the handheld diagnostic tool memory and your PC.



To move a file between handheld tool memory to the computer:

1. Select the **Data** tab.
A list of files stored in memory displays.
2. From the list, select the file or files that you want to move.
3. Select **Move To**.
A dropdown menu of available folders displays.
4. Select the folder that you want the files to move to.
The selected files move to the folder.

4.5 Using the Menu Bar Buttons

This section explains Menu bar button operations, refer to [“Main Screen Layout” on page 15](#).

4.5.1 File

Following is a brief explanation of operations available from the File button. Many of the functions are the same as, or similar to, those available on the Toolbar, see [“Using the Toolbar Buttons” on page 22](#) for additional information. Some File button operations can also be activated by right-clicking with the mouse when a target file is highlighted in the data list.

Open File

This function is used to open data files for viewing. The ShopStream Connect software lets you view bitmap files (*.BMP) and movie files (*.SPM) stored on both the computer and the handheld diagnostic tool. This operation is also available with a right-click of the mouse.

Copy To

This function creates a duplicate of the selected file(s) at the other location (PC if the file is on the handheld or handheld if the file is on the PC). This operation is also available with a right-click of the mouse.

Move To

This function moves selected file(s) to another location (to the PC if the file is on the handheld, or to the handheld if the file is on the PC). This operation is also available with a right-click of the mouse.

Delete

This function erases the selected file(s). This operation is also available with a right-click of the mouse.

Edit

This function changes the name of file selection. This operation is also available with a right-click of the mouse.

Email

This function starts an E-mail message with a copy of file selections attached. This operation is also available with a right-click of the mouse.

Refresh

This function resamples and cleans up the display screen.

Exit

This function closes the ShopStream Connect software.

4.5.2 Edit

Copy and **Paste** commands are available from the **Edit** menu.

**To copy and paste a file:**

1. Select **Data** to view the list of available files.
2. Highlight the file to be copied.
3. From the Menu bar, select **Edit > Copy**.
4. Highlight the folder that the file is to be copied into in the File Directory Structure window.
5. From the Menu bar, select **Edit > Paste**.
The file is now copied into the new location.

4.5.3 Tools

The tools menu is used for maintenance and service operations.

Update Software

This function lets you update the ShopStream Connect application software, as well as your handheld tool software from the PC using an Internet connection to the Snap-on Web server.

**To update the software:**

1. Select **Tools > Update Software** from the Menu bar.
When connectivity is established with the Snap-on Web server, the installation begins.
2. Follow the on-screen instructions.

Backup

This function copies the handheld tool data onto the PC.

Restore

This function reinstalls the operating program on a handheld tool.

Options

This function is not available at this time.

4.5.4 Print

This selection sends the currently displayed ShopStream Connect screen to your printer.

**To print the on-screen information:**

1. Select **Print > Screen**.
The Print dialog box displays.
2. Select **OK** from the Print dialog box.

4.5.5 Help

Your unit has Tool Help containing reference and procedural information. The help button offers the following selections:

- **Help**—tool reference and procedural information displayed in a web browser.
- **User's Manual**—a printable (PDF) version of the Tool Help file.
- **About ShopStream Connect**—shows the version of ShopStream Connect.

4.6 Viewing Movie Files

Your ShopStream Connect software allows you to view movies recorded with your handheld tools on your PC. When a movie is selected, it opens and displays in the Scanner DataViewer (Figure 4-5). Scanner DataViewer allows you to custom configure the displayed data in a number of ways, and also provides a number of navigation options.

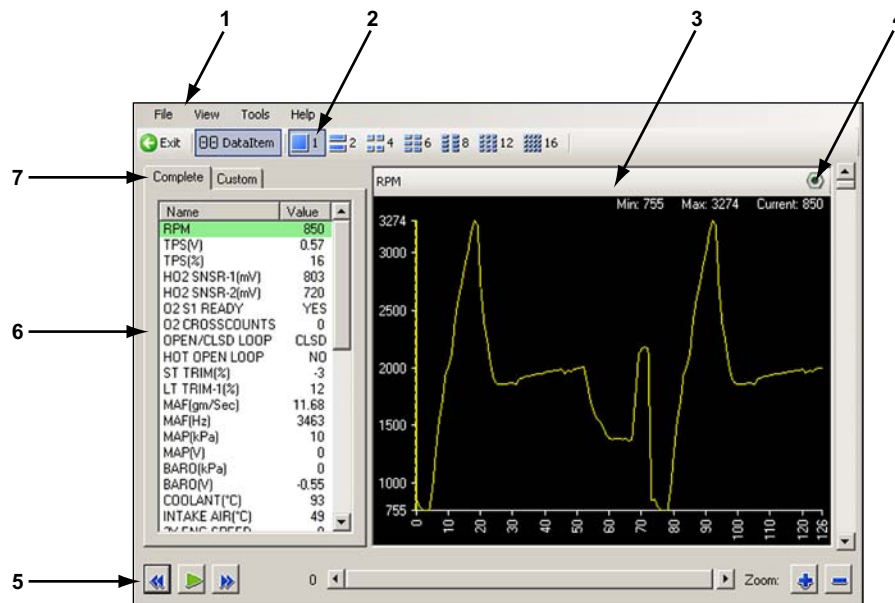


Figure 4-5 Sample Scanner DataViewer

- 1— Menu bar
- 2— Display toolbar
- 3— Movie screen
- 4— Properties icon
- 5— Navigation toolbar
- 6— Parameter list
- 7— Parameter configuration tabs

4.6.1 Menu Bar

The menu bar at the top of the screen contains the File, View, Tools, and Help menus. click on the desired topic to open the menu.

File Menu

The File menu offers the following selections (Figure 4-6):

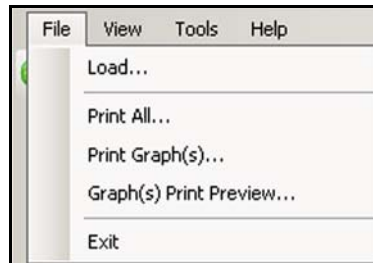


Figure 4-6 Sample Scanner DataViewer File menu

- **Load**—use to locate and open movie files, launches a navigation window.
- **Print All**—use to send the complete currently viewed screen to the printer.
- **Print Graph(s)**—use to send selected graphs to the printer.
- **Graph(s) Print Preview**—use to preview graphs before printing
- **Exit**—use to close Scanner DataViewer.

When Print Graph(s) or Graph(s) Print Preview is selected, a dialog box opens that allows you to choose which graphs to include, how many graphs appear on a page, and the font of the included text (Figure 4-7).

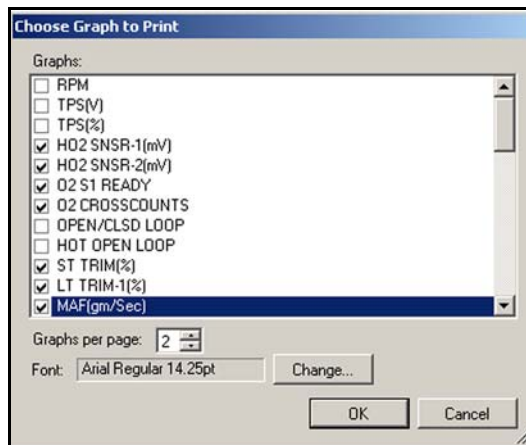


Figure 4-7 Sample Choose Graphs dialog box



To print graphs:

1. Click on the desired parameters, a check mark in the box indicates a graph will be included in the print. Click again to deselect a parameter.
2. Select **Change** to modify the font, this opens a standard Windows font dialog box.

- a. Modify the font as desired.
- b. Click **OK** to close the font dialog box.
3. Once all selections are made, click **OK**.
A print dialog box opens.
4. Click **OK**.
 - a. If Print Graph(s) was selected, the file is sent to the printer.
 - b. If Graph(s) Print Preview was selected, a preview window opens. Click on the printer icon (Figure 4-8) to send the file to the printer.

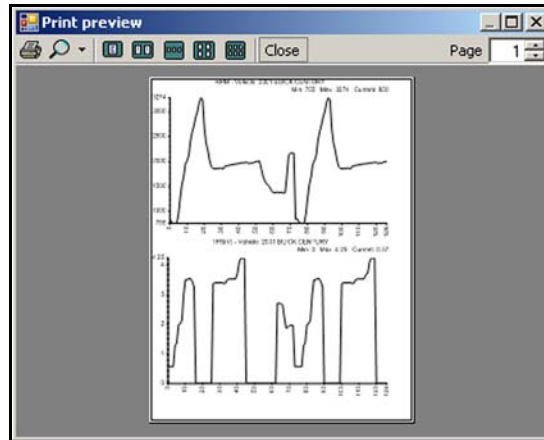


Figure 4-8 Sample print preview window

View Menu

The View menu allows you to change how data is displayed on the screen (Figure 4-9).

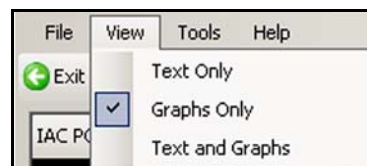


Figure 4-9 Sample Scanner DataViewer View menu

Highlight and click with the mouse to select from the following menu selections:

- **Text Only**—shows all parameters and their values as text only.
- **Graphs Only**—shows all parameters as graphs only.
- **Text and Graphs**—shows all parameters and their values as text in the left panel of the screen, and shows them as graphs in the right panel of the screen.

Tools Menu

The Tools menu allows you to open the Properties dialog box (Figure 4-10), which is used to modify screen attributes.

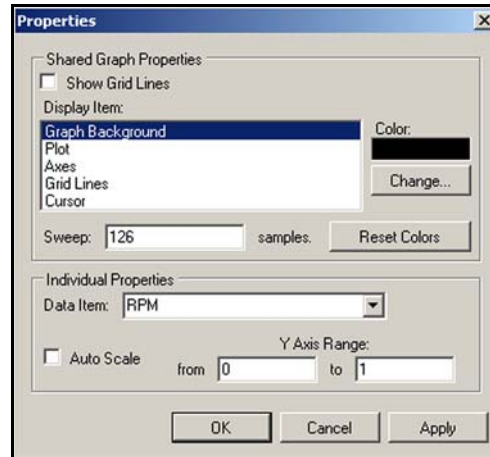


Figure 4-10 Sample Properties dialog box

The Properties dialog box has two sections; Shared Graph Properties and Individual Properties. Shared Graph Properties changes appear on all of the graphs, Individual Properties changes appear on the selected graph only. The following selections are available:

- **Show Grid Lines**—when checked, a line displays at each major division of the graphs. Click to select or deselect.
- **Display Item**—use to view the display color of the listed items. Highlight an item and the current color appears in the Color box.
- **Change**—use to change the color of the highlighted item, select to open a color palate.
- **Sweep**—use to adjust the number of data frames that appear on the screen (zoom in or out), highlight and type in the desired number.
- **Reset Colors**—use to restore the default color settings.
- **Data Item**—use this pulldown menu to select individual graphs for modification.
- **Auto Scale**—minimum and maximum (Y axis) values automatically adjust to the signal when the box is checked, uncheck the box if you want to custom set the values.
- **Y Axis Range**—use to type desired minimum (from) and maximum (to) values in the selection boxes. This field is only active when Auto Scale is deselected.
- **OK**—applies the changes and closes the properties dialog box.
- **Cancel**—closes the properties dialog box without making changes.
- **Apply**—applies the changes and leaves the properties dialog box open.



NOTE:

The Properties icon on each graph also opens the Properties dialog box (Figure 4-5).

4.6.2 Display Toolbar

The Display toolbar is used to switch between graph and data views.

- **Exit**—closes Scanner DataViewer.
- **88 Dataltem**—quickly switches between graph and data and graph views.
- **1 to 16**—determines how many graphs display at a time.



To change the screen view:

1. Highlight the desired screen view.
 2. **Left-click** the mouse.
- The new selection displays (Figure 4-11).

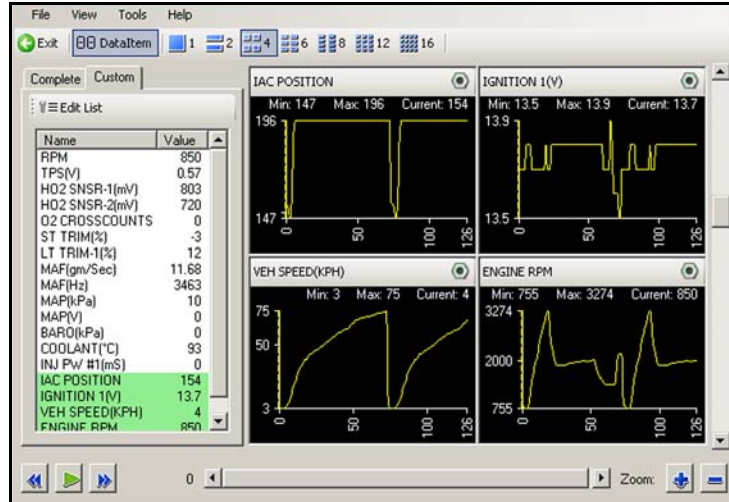








Figure 4-11 Sample changed screen view

4.6.3 Navigation Toolbar

The Navigation toolbar buttons perform as follows:

- | | | |
|---|-----------------------|--|
|  | Previous Frame | Moves the cursor back one frame |
|  | Next Frame | Moves the cursor forward one frame |
|  | Pause | Indicates the movie is playing, select to stop |
|  | Play | Indicates the movie is paused, select to resume playing |
|  | Zoom In | Incrementally increases the magnification of the display |
|  | Zoom Out | Incrementally decreases the magnification of the display |

The slider bar only becomes active when you zoom in on the display. The number at the left shows what frame is currently showing. When the slider bar is active, you can drag the slider or click the arrows at either end of the bar to move through the movie (Figure 4-12).



Figure 4-12 Sample movie slider bar

4.6.4 Parameter List and Tabs

The parameter list shows the name for each parameter along with its value for the current frame. The parameter configuration tabs allow you to choose between displaying all available parameters, or only those from a custom list.



To custom configure a parameter list:

1. Select the **Custom** parameter tab.
2. Click **Edit List** in the custom window.

A list of available parameters displays (Figure 4-13). Parameters with a check will display, those with an empty box will not. Click individual parameters to select/deselect them. The Select All and Select None can speed up the selection process.

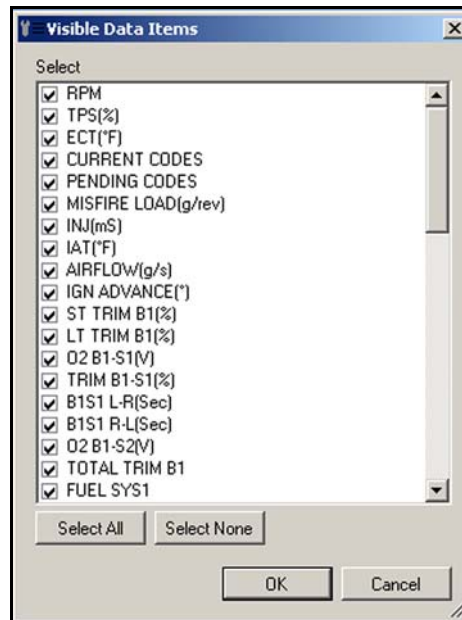


Figure 4-13 Sample edit parameter list

3. Select the parameters you want to include in the display list.
4. Click **OK** to close the window.

Now, only the parameters on your custom list display.

Communicating with Early MODIS™ Units

The original MODIS printed circuit board design did not have a mini A USB port by the side CompactFlash® (CF) card slot. Therefore, these units cannot be directly linked to a computer with a USB cable. However, it is possible to view files stored on an early MODIS with the ShopStream Connect™ software, it just requires a few extra steps.

A.1 Viewing Early MODIS Files

A CF card reader that connects to your personal computer (PC) is required to view early MODIS files. The CF reader is a standard item that may be purchased from most computer and office supply retailers.



To view early MODIS files:

1. Power down the MODIS unit.
2. Remove the CF card from your MODIS.
3. Connect the CF card reader to your PC and insert the MODIS CF card.
4. If a “removable disk” dialog automatically opens on your PC, click cancel.
5. Launch ShopStream Connect.

ShopStream Connect should recognize the CF card as a MODIS unit and show it as an available selection in the directory tree. If not:

- a. Open the CF card through Windows®.
- b. Open the User folder, then open the Data folder.
A list of saved data files displays.
- c. Copy the files you want to view in ShopStream Connect.
- d. Open the target folder (C:\Documents and Settings\All Users\Application Data\ShopStream\MODIS Files) on your computer.
- e. Paste the files into the target folder.

These files are now ready for viewing with ShopStream Connect.

IMPORTANT:

Do not change or alter files in any of the other locations on the CF card, as this could impact the operation of your MODIS unit.

Index

- B**
- Backup, 27
- C**
- Communication
 - Establishing, 5–14
 - ETHOS, 5–6
 - MODIS, 7–9
 - SOLUS, 9–10, 10–12
 - Terminating, 14
 - VantagePRO, 12–14
 - Controls, 21
 - Copy to, 25, 26
- D**
- Deleting files, 24, 26
 - Drag-and-drop, 22
- E**
- Edit menu, 16
 - Editing files, 26
 - E-mail, 23, 26
 - Exit, 26
- F**
- File menu, 16
 - Files
 - Deleting, 24, 26
 - Drag-and-drop, 22
 - Edit, 26
 - Viewing, 22
 - Functions
 - Copy to, 25, 26
 - Edit, 24
 - E-mail, 23, 26
 - Exit, 26
 - Move to, 25, 26
 - Open File, 26
 - Open, 22
 - Refresh, 26
- H**
- Help, 17, 28
- I**
- Icons
 - Movie, 32
 - Toolbar, 18
- M**
- Main screen layout, 15
 - Menu bar
 - Edit menu, 16
 - File menu, 16
 - Help menu, 17
 - Print menu, 17
 - Tools menu, 17
 - Menu bar, 16–17
 - Move to, 25, 26
 - Movie files, 28–33
- O**
- Open File, 26
- P**
- Print, 17, 27
- R**
- Refresh, 26
 - Restore, 27
- S**
- Safety Information iii–iv
- T**
- Tabs, 18–20
 - Toolbar icons, 18
 - Tools menu, 17
 - Tools, 27
- U**
- Update software, 27