



Software Download and Installation Instructions

This document provides instructions for installing the ShopStream Connect™ software on your personal computer (PC).

Minimum Requirements

IMPORTANT:

If your PC does not meet the minimum requirements, do not attempt to install the ShopStream Connect software.

Before installing the software, verify the following requirements:

- PC with the following minimum system requirements:
 - System Properties:
 - Operating system—Microsoft Windows 2000 Service Pack 4, Windows XP, or Vista. The system must be upgraded to Microsoft .NET Framework Version 2.
 - Processor—Pentium 4 or later, or equivalent
 - Memory—256 MB minimum, 512 MB recommended
 - Hard Drive—50 MB free space
 - CD-ROM, DVD, or DVD-ROM drive
 - USB 2.0 or later
 - Internet Explorer 6.0 or higher
 - Internet connection for updates
- **USB cables to connect PC to SNAP-ON scantool:**
 - **Refer Section 7. (the last page of this document)**
- Adobe Reader software (free download at www.adobe.com/products/reader)
- ShopStream Connect software (free download at, snapontools.com.au/diagnostics)

Verifying PC System Properties

Follow the procedures below to check your PC system properties and to determine how much free space is available on your hard drive.

To check your PC system properties:

- On the Desktop, right-click **My Computer** and select **Properties**. The **System Properties** dialog box displays with your system information (Figure 1).



Figure 1 Windows XP System Properties dialog box

To check PC hard drive free space:

1. On the Desktop, double-click **My Computer**.
2. Select **View > Details**.



Figure 2 Sample PC hard drive free space details

Downloading the Software

Follow the procedure below to download the ShopStream Connect software.

To download the software:

1. From your PC, using your Internet browser, go to **snapontools.com.au/diagnostics**
2. Locate the ShopStream Connect software download.
3. Follow the on-screen instructions.

Installing the Software

Follow the procedures below to install the ShopStream Connect software onto your PC.

To install the ShopStream Connect software:

1. Locate the ShopStream Connect software installer and double-click
2. When the welcome screen displays (Figure 3), press **Next**.



Figure 3 Sample Welcome screen

The License Agreement screen displays (Figure 4).

3. Select **I accept the terms of the license agreement** and press **Next**.



Figure 4 Sample License Agreement screen

The Choose Destination Location screen displays (Figure 5).

4. Press **Next**.



Figure 5 Sample Choose Destination screen

The Ready to Install the Program screen displays (Figure 6).

5. Press **Install**.



Figure 6 Sample Ready to Install Program screen

The Setup Status screen tracks progress as the program installs (Figure 7).

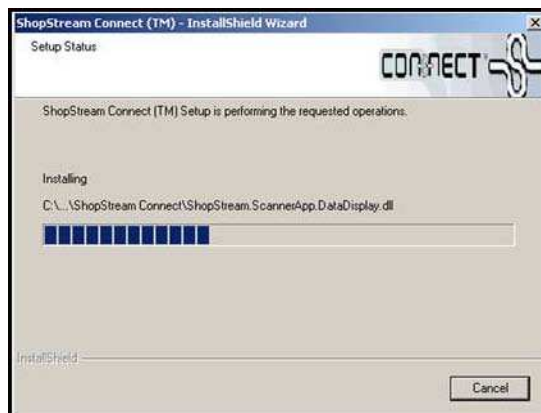


Figure 7 Sample Setup Status screen

6. When the Complete screen displays, press **Finish** (Figure 8).

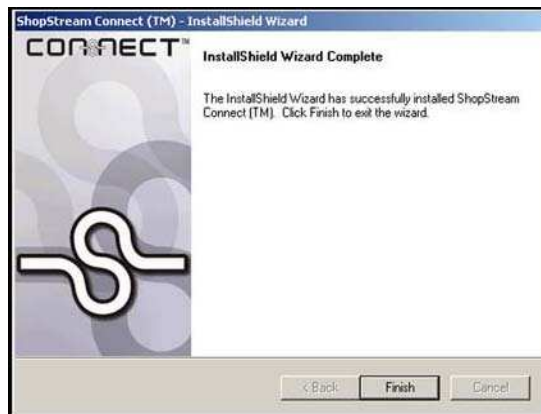


Figure 8 Sample Complete screen

A new PCLink shortcut icon is added to your desktop, double-click the icon to launch the ShopStream Connect software.

7. **To connect your SNAP-ON Diagnostic scantool to your PC:-**

SOLUS PRO™, ETHOS™ & Vantage PRO™

- 1) Use the SNAP-ON cable P/N EAC0093L05A . 1 end is a standard USB and the other end is a mini USB. (This cable has come standard in SOLUS PRO™ & ETHOS™ kits since 2008.)
- 2) For Vantage PRO™, this cable is standard in 9.4 versions (from January 2010), for earlier versions cable P/N EAC0093L05A needs to be purchased.

MODIS™

- 1) For early MODIS where there is no USB port under the left hand grip then the only method of transferring information to Shopstream Connect is to purchase a CF card, install in the top slot, capture the information in this CF, remove and using a CF reader transfer to your PC. For more information refer to the Shopstream Connect User Manual on the Shopstream Connect web page.
- 2) For later MODIS units where there is the USB port under the left hand grip then use the Snap-on cable P/N EAC0093L05A . 1 end is a standard USB and the other end is a mini USB. (This cable has come standard in MODIS kits since 2008.) Note:- A small steel clip must be around this USB connector under the LH grip. All units coming into Australia have this clip. If for any reason your steel clip is not around the USB connector then contact SNAP-ON Australia Engineering Dept. quoting P/N EAS2036L38A.

SOLUS™... have 2 options

- 1) Transfer the CF card:- Purchase a CF card, install in the top slot CF2, capture the information to this CF2, remove and using CF reader transfer to your PC. For more information refer to the Shopstream Connect User Manual on the Shopstream Connect web page.
- 2) Purchase a cable to join the SOLUS™ to the PC. This cable is not available through SNAP-ON. 1 end is standard USB(for your PC), and the other end a square USB to suit the port in the top of the SOLUS™. This cable can only access CF1, so if the recording is in CF2, then the file must be changed to CF1 (refer the SOLUS user manual)... or use option 1 above. (We understand this cable is available through popular electronic component & accessories chain stores.)